

Soil Moisture and Wildfire Prediction Workshop

April 29, 2019 (8:50 am – 6 pm)

**In association with the 6th International Fire Behavior and Fuels
Conference hosted by IAWF**

Matt Levi – University of Georgia



Objectives

- ❑ Identify science and management needs from the fire community and soil moisture community related to modeling, risk assessment, planning, and decision support tools.
- ❑ Find synergy between groups and link similar projects to existing Soil MERGE (SMERGE) and Climate Adaptation Science Center projects
- ❑ Benefit fire modeling and fire danger rating for the sake of improved wildfire preparedness and response.

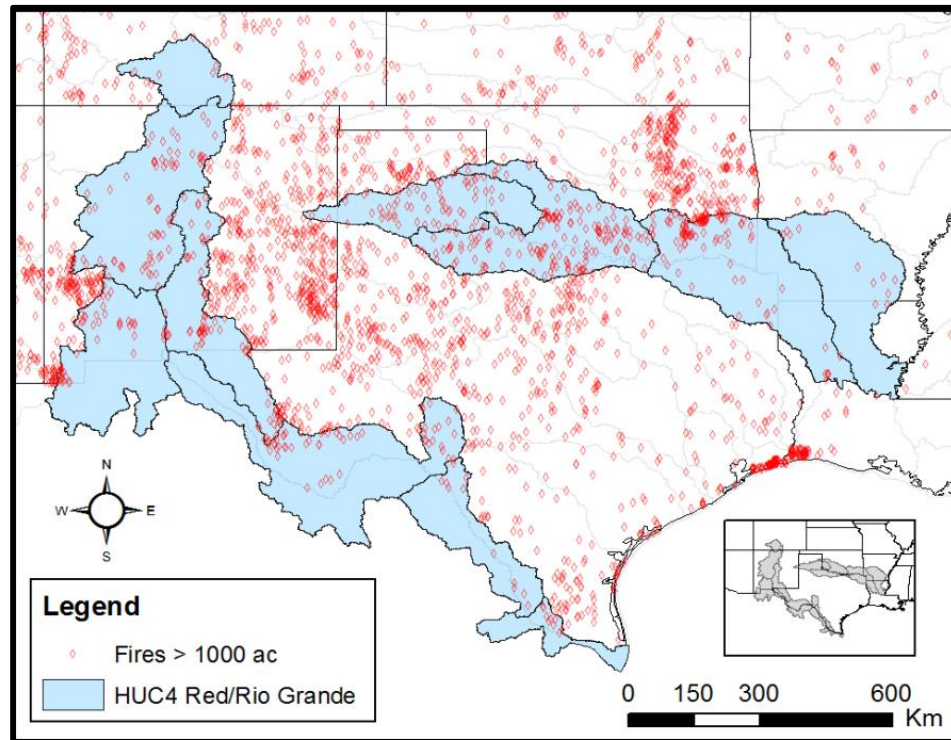
Input from stakeholders

Discuss current trends and status of:

- ❑ Wildfire occurrence, impacts, and response
- ❑ Fire modeling and fire danger ratings
- ❑ Soil moisture monitoring and modeling
- ❑ Linkages between soil moisture, fuel moisture, and wildfire

Geographic focus:

Rio Grande River Basin, Red River Basin, Southwestern and South Central US



Select contacts

Tyson Ochsner; Associate Professor – Oklahoma State University;
tyson.ochsner@okstate.edu

Emile Elias; Director – USDA Southwest Climate Hub;
Emile.Elias@ARS.USDA.GOV

Dannele Peck, Director – USDA Northern Plains Climate Hub;

Matt Levi – Assistant Professor; University of Georgia;
matthew.levi@uga.edu

Current partners



SOUTH CENTRAL
CLIMATE ADAPTATION SCIENCE CENTER



UNIVERSITY OF
GEORGIA



Climate Hubs
U.S. DEPARTMENT OF AGRICULTURE

